

Department of Anesthesiology

Residency Program - Match 2025



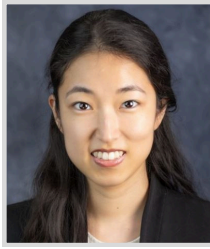
Sanjeevani Bhavsar, MD

Washington University School of Medicine in St. Louis



Lindsay Bruce, MD

University of Tennessee Health Science Center College of Medicine



Jin Choi, MD

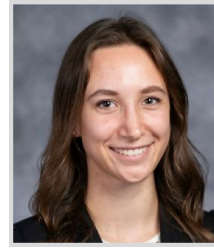
University of Florida College of Medicine



Daria Coffield, MD

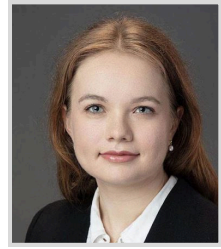
George Washington University School of Medicine and Health Sciences

**Advanced-track resident joining as a CA-1 in July 2026*



Alexandra Dejneka, MD

Northwestern University The Feinberg School of Medicine



Sophia Downey, MBBS

Royal College of Surgeons in Ireland School of Medicine



Bayardo Garay, MD, PhD

University of Minnesota Medical School

**ASAP research track resident*



Isabel Haupfear, MBBS

Trinity College Dublin School of Medicine



Lauren Jennings, MD

Loyola University Chicago Stritch School of Medicine



Elizabeth Joseph, MD

West Virginia University School of Medicine - Charleston



Evangelos Karanikolas, MD

University of Athens School of Health Sciences



Elizabeth Kunnel, MD

Chicago Medical School at Rosalind Franklin University of Medicine & Science



Reshma Mulla, MD, MBBS

Postgraduate Institute of Medical Education and Research, Chandigarh



Benjamin Ryckman, MD

Creighton University School of Medicine



Rachel Schneck, MD

Loyola University Chicago Stritch School of Medicine



Joe Smith, MD

University of Oklahoma College of Medicine



X-zavyer Smith, MD

Vanderbilt University School of Medicine



Ellis Tibbs, MD

University of Maryland School of Medicine

**Scholars Program research track resident*



Preethi Tumati, MD

University of Missouri-Kansas City School of Medicine



Prateek Upadhyay, MD, MBBS

Government Medical College Chandigarh



Ravina Vasanwala, MD

University of Iowa Roy J. and Lucille A. Carver College of Medicine



Diandria Veals, MD

The University of Texas Southwestern Medical School



Angel Zhang, DO

Nova Southeastern University Dr. Kiran C. Patel College of Osteopathic Medicine